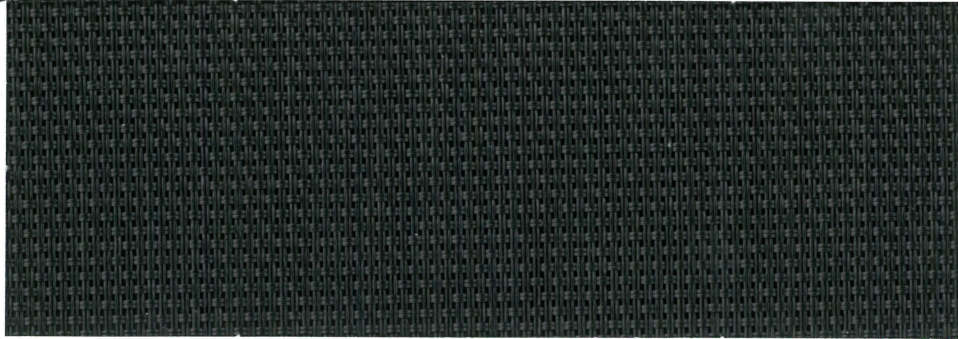




# TEXTILENE® 95

BRAND FABRIC

The original  
all-weather fabric.

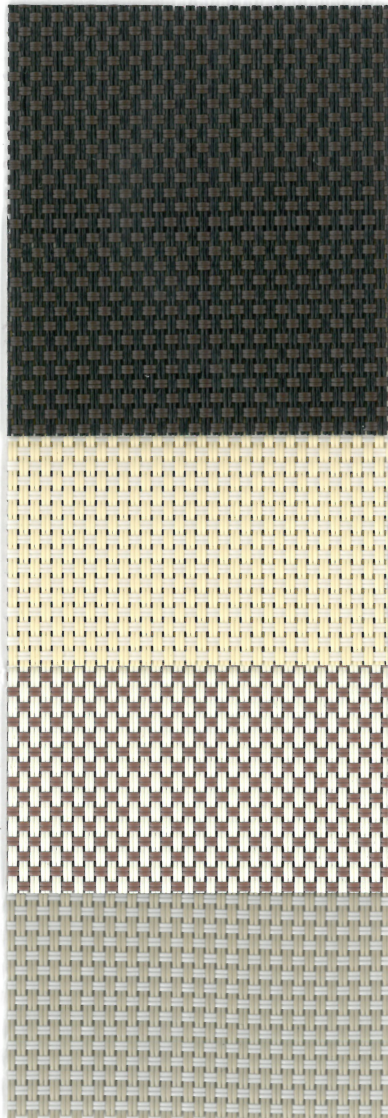


Galaxy Black  
T18ANS001 x 119"

\*Custom colors and widths  
available. Minimum order of  
1000 yards. Upcharges  
may apply.

\*\*Available in 28 linear yard  
rolls.

TEXTILENE® 95 is a durable synthetic fabric made of PVC coated polyester. Designed to reduce heat transfer and solar glare, our fabric can lower overall energy cost and protect indoor furnishings. Flame and fade resistant, it is an excellent choice for a variety of indoor or outdoor uses.

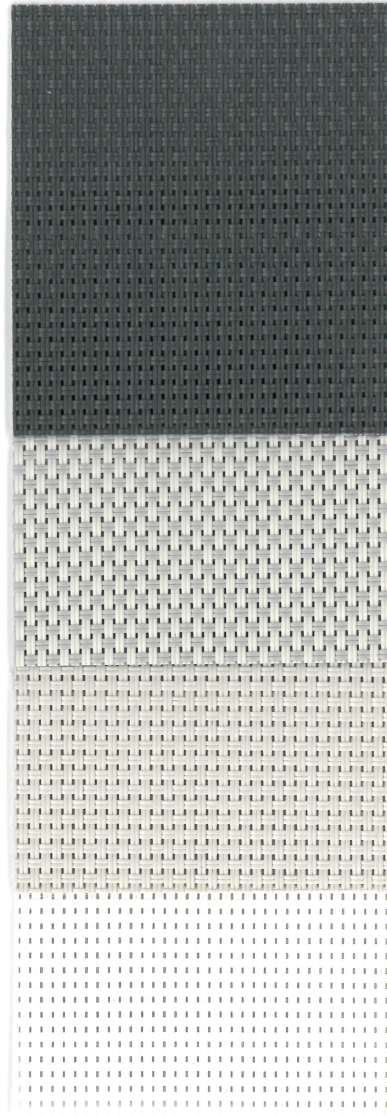


Tobacco Leaf  
T18ANT006 x 119"

Sandstorm  
T18ANT003 x 119"

Almond Brown  
T18ANT009 x 119"

Safari Cashmere  
T18ANT002 x 119"



Graphite  
T18ANS004 x 119"

Pewter  
T18ANT007 x 119"

Quartz  
T18ANS002 x 119"

Pure White  
T18ANS005 x 119"



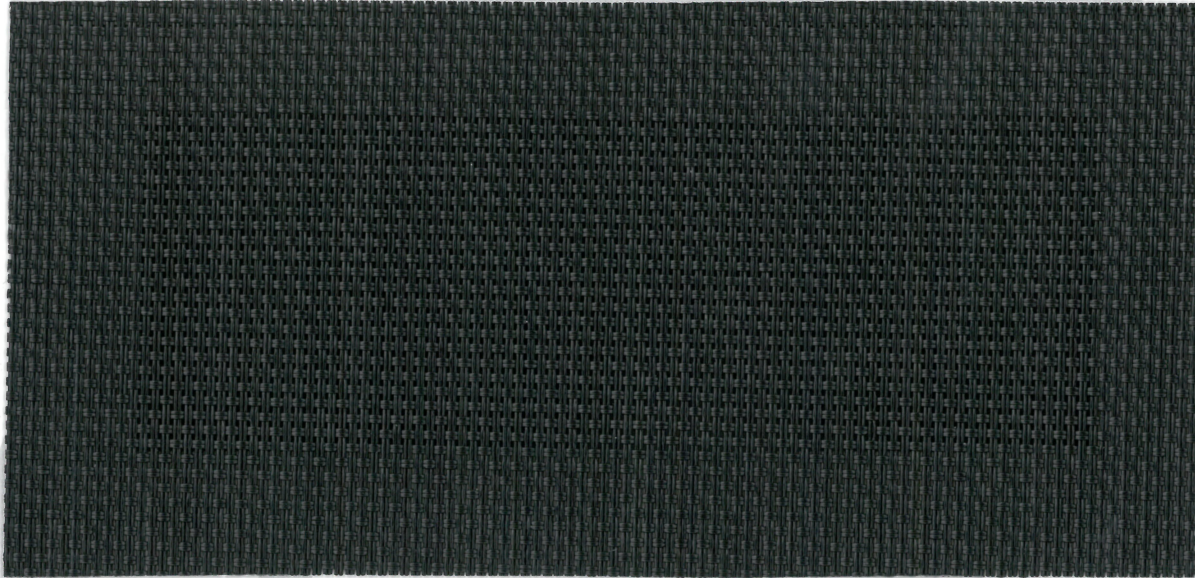
119" = 302.26 cm



# Specifications



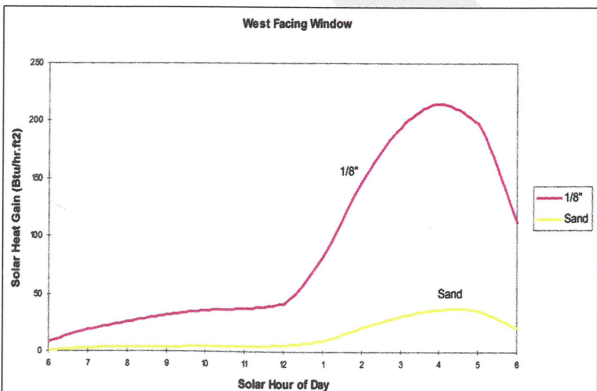
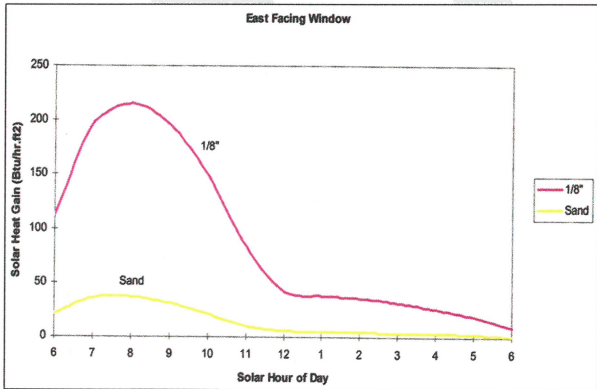
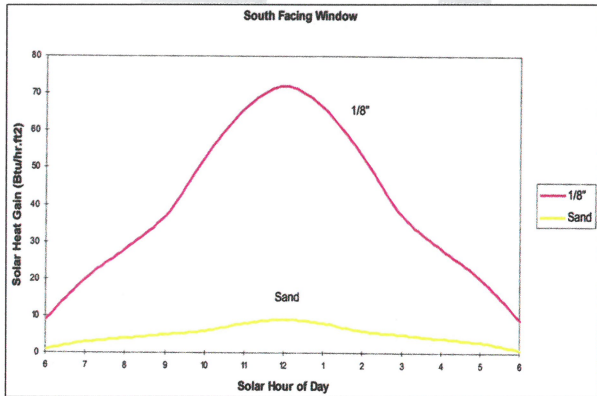
PRINTABLE



## Technical Data

Item Number: T18AN

Product Description: A fabric using .018" diameter vinyl coated 500 denier polyester core yarns woven in the warp and fill direction.



Attribute	ASTM	Warp	Fill	Typical
Construction, end/inch	D3775-12	35.3 ± / -5	26.5 ± / -.5	
Weight, oz/yd <sup>2</sup>	D3776-09	--	--	17.3
Weight, g/m <sup>2</sup>	D3776-09	--	--	559.5
Tensile Strength (grab), lbf / daN	D5034-09	544.0 / 242.0	417.1 / 185.5	
Tensile Strength (strip), lbf / daN	D5035-09	256.3 / 114.0	244.9 / 108.9	
Tear Strength, (trapezoidal), lbf / daN	D5733	58.9 / 26.2	46.2 / 20.6	
Elongation, %	D5035-11	30.8	25.8	
Abrasion Resistance (CS10/500 cycles/ with no added weight)	D3884-09	No exposure of core yarn		
Flammability Rating	CA Title 19 & NFPA 701			
Weatherability, 1200 hours	G154	Trace Discoloration		
Mildew Resistance	G21-13	No growth		
Thickness, inches/mm	D1777-96	.030"/0.762m		

The above results are a representation of real data from single test samples. Presently no specification is incorporated.

Twitchell Exterior Window Shade Solar Screen													
Profile	Total Solar						Shading Coefficient						
	Visible			UV			O.F.	1/8" Clr.	1/4" Clr.	1/4" HA	Clr. Dbl.	HA/ Dbl.	
	Trans.	Ref.	Abs.	Trans.	Ref.	Abs.							Trans.
Angle	Trans.	Ref.	Abs.	Trans.	Ref.	Abs.	Trans.	O.F.	1/8" Clr.	1/4" Clr.	1/4" HA	Clr. Dbl.	HA/ Dbl.
0	0.08	0.03	0.89	0.12	0.03	0.85	0.07	0.07	0.19	0.18	0.18	0.14	0.13
45	0.05	0.04	0.91	0.08	0.04	0.88	0.05	n/a	0.16	0.16	0.15	0.12	0.11